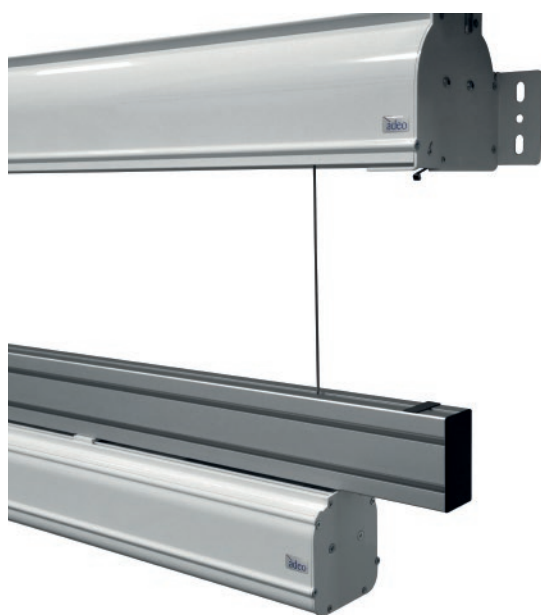


# Lift Screen

Elevator for on-ceiling motorized screens, with powder-coated aluminium case in white color (RAL 9016). Casing with flat iron end caps, equipped with 4m long iron cables.

The maximum size of the screen you can install on the Lift Screen is 4.5m overall size for a weight of 60kg.

See page **109**  
for Technical data



## Create your own screen with the PSS

- > **Personalized dimensions:** width of the casing and cable height
- > **Motor type:** standard motor
- > **Case color:** standard in White Gloss or optional in Black Matte for an extra cost
- > **Side of command/motor:** right only

## Standard Accessories

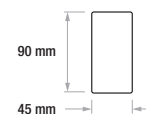
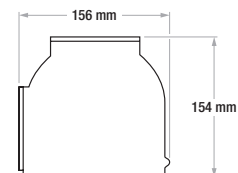
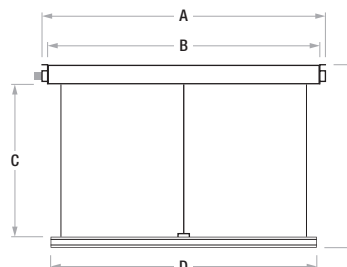
- > Kit with wall or ceiling mount brackets
- > Unipolar switch

## Optional Accessories

- > 1 screen interface and 1 lift screen interface to drive both in radio frequency with 2 channels remote control (not included), 12V trigger, unipolar switch, dry contact or RS232
- > Extension brackets for screens up to 60 cm

## Lift Screen

Cable Length	Bar Width	Overall Width	Overall Height	Casing Width	Packaging Dimensions	Net Weight	Gross Weight
C	D	A	E	B	mm	kg	kg
4000	2500	2580	4244	2480	2780x210x220	23	26,5
4000	3500	3580	4244	3480	3780x210x220	32	35,5
4000	4000	4580	4244	4480	4780x210x220	37	40,5



Surface  
Fireproof  
Certifications