

Multiformat was especially created by Adeo for real connoisseurs of home cinema. This screen is distinguished by the presence of two independent projection surfaces (a top masking surface and a rear projection surface), attached to two rollers: by synchronising them the format of the projection area can be varied, to obtain an image which is always bordered with black edges, enhancing contrast. These are special, non-varnished anti-reflective black edges, with a width of 7 cm (while traditional edges are 3 or 5 cm wide). It is important to note that the top surface is directly in contact with the rear surface, thanks to the vertical alignment of the rollers: this avoids the formation of shadows during projection. Planarity is ensured by the front drop of the surface, while the special anchoring to the roller eliminates any risks of horizontal crease marks. A perfect surface is possible at all times, thanks to a dedicated command that unrolls the canvas completely, to facilitate cleaning operations. The motorized rolling is controlled through an integrated radio receiver encoder; an additional remote control is included for the setup of formats. The case is white (RAL 9016), with brushed aluminium lateral ends, which completely mask the screws. The anchoring system is simple and super-quick, for easy installation.



**Create your own screen with the PSS:**

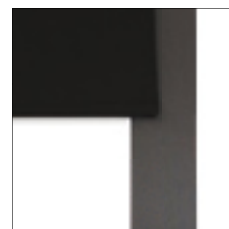
- > **personalized dimensions:** width
- > **formats:** 7 different configurations
- > **roller type:** only radio integrated
- > **case:** available only with case
- > **case color:** available only in white with brushed aluminium lateral ends
- > **projection surfaces:** VisionWhite, VisionWhitePro, VisionGrey, VisionAcoustik, with black borders
- > **height of top:** from 10 to 40 cm
- > **projection surface drop:** front only
- > **side of command/motor:** right only

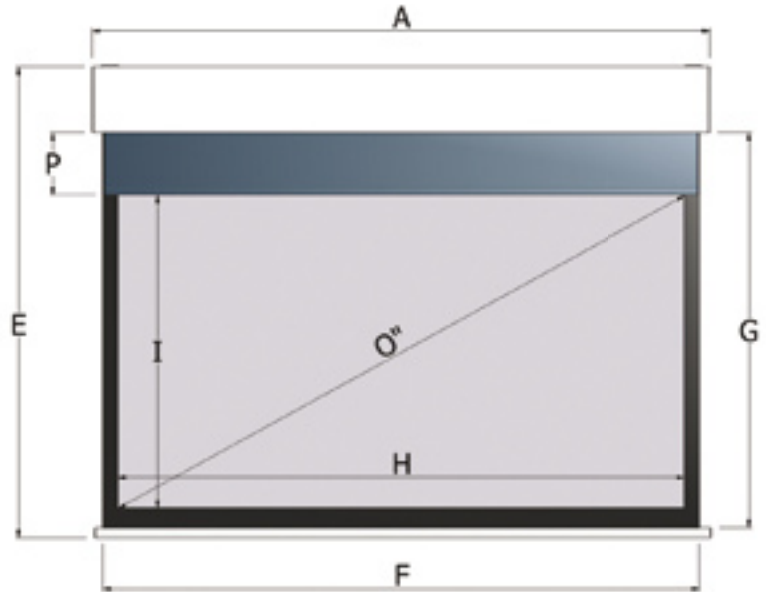
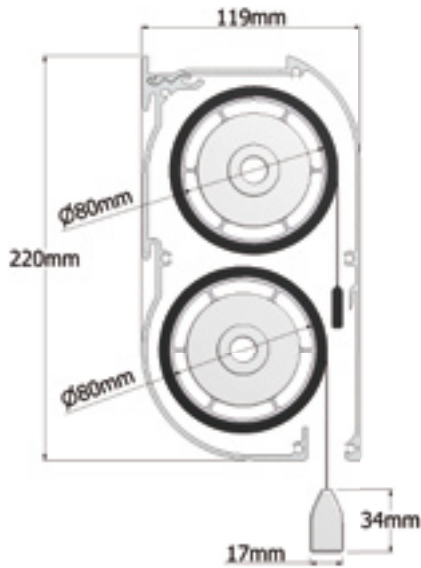
**Standard accessories:**

- > kit with wall -or ceiling- quick mount brackets
- > Way master remote control
- > Way pilot remote control
- > case for Way remote control

**Optional accessories:**

- > bracket extensions for screens up to 60 cm





Format	Aspect ratio	Overall width	Surface width	Surface height	Net surface width	Net surface height	Top standard	Max extra Top	Diagonal inches	Shipment sizes
		A	F	G	H	I	P	cm	O''	cm
4:3	1.33	225	218	168	204	153	10	40	100	233x30x33
		250	243	187	229	172	10	40	113	258x30x33
		275	268	206	254	191	10	40	125	283x30x33
		300	293	224	279	209	10	40	137	308x30x33
		325	318	243	304	228	10	40	150	333x30x33
Wide European	1.66	225	218	138	204	123	10	40	94	233x30x33
		250	243	153	229	138	10	40	105	258x30x33
		275	268	168	254	153	10	40	117	283x30x33
		300	293	183	279	168	10	40	128	308x30x33
		325	318	198	304	183	10	40	140	333x30x33
16:9	1.78	225	218	130	204	115	10	40	92	233x30x33
		250	243	144	229	129	10	40	103	258x30x33
		275	268	158	254	143	10	40	115	283x30x33
		300	293	172	279	157	10	40	126	308x30x33
		325	318	186	304	171	10	40	137	333x30x33
Wide Screen	1.85	225	218	125	204	110	10	40	91	233x30x33
		250	243	139	229	124	10	40	102	258x30x33
		275	268	152	254	137	10	40	114	283x30x33
		300	293	166	279	151	10	40	125	308x30x33
		325	318	179	304	164	10	40	136	333x30x33
Cinemascope	2.35	225	218	102	204	87	10	40	87	233x30x33
		250	243	112	229	97	10	40	98	258x30x33
		275	268	123	254	108	10	40	109	283x30x33
		300	293	134	279	119	10	40	119	308x30x33
		325	318	144	304	129	10	40	130	333x30x33

There is a very ample variety of formats to choose from.

For projectors with a 4:3 aspect ratio the following formats are available:

- > 1.33 NTSC PAL 4:3
- > 1.66 Wide European
- > 1.78 HDTV 16:9
- > 1.85 Wide
- > 2.35 Cinemascope 21:9
- > 2.40 Panavision

For projectors with a 16:9 aspect ratio the following formats are available:

- > 1.78 HDTV 16:9
- > 1.85 Wide
- > 2.35 Cinemascope 21:9
- > 2.40 Panavision

Surfaces Fireproof Certification

B1 M1

Two more formats, with height lower than that of the starting format, can be added according to choice.

PSS formats

