

Biformat Tensio is a screen designed to meet even the highest expectations in the home cinema market. This is achieved thanks to a technical profile and a unique tensioning system. Inside the same case are two distinct projection surfaces of different formats, bordered with special non-varnished anti-reflective black edges. These enable to enhance the contrast of the projected image much more effectively than traditional 3 or 5 cm edges.

In addition to being positioned in direct contact with each other, to avoid focus loss, the projection surfaces are fixed to the roller, in such a way as to eliminate all risks of annoying horizontal crease marks. Furthermore, the front drop of the surface and the vertical alignment of the rollers ensure planarity. The motorized rolling is controlled through a wall-mounted remote control or an integrated radio receiver.

The case is white (RAL 9016), with brushed aluminium lateral ends, which completely mask the screws. Owing to the practical anchoring system, use is immediately possible.



Create your own screen with the PSS:

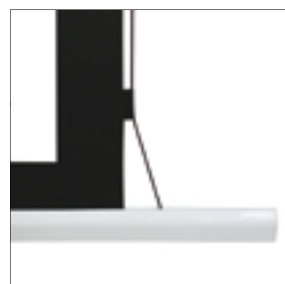
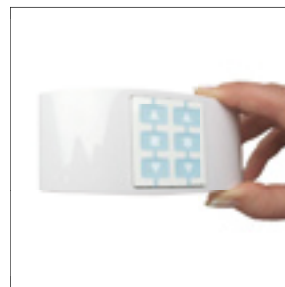
- > **personalized dimensions:** width
- > **roller type:** standard motorized or radio integrated
- > **case:** available only with case
- > **case color:** available only in white with brushed aluminium lateral ends
- > **projection surfaces:** VisionWhite, VisionWhitePro, VisionGrey, VisionAcoustik, available also with black borders
- > **height of top:** from 10 to 40 cm
- > **projection surface drop:** front only
- > **side of command/motor:** right only

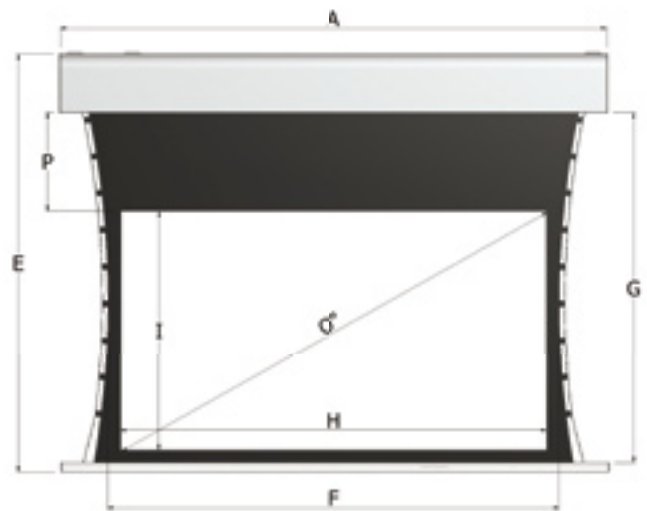
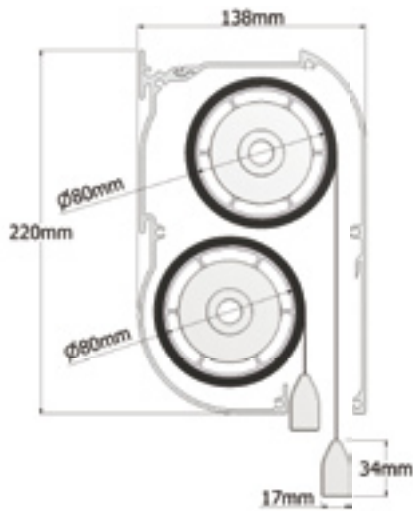
Standard accessories:

- > kit with wall -or ceiling- quick mount brackets
- > 2 unipolar selector switches
- > 2-channels *Way* remote for radio integrated screens
- > case for *Way* remote control for radio integrated screens

Optional accessories:

- > receiver and RF remote control for motorized screen (3 modalities: basic, automatic and compatible with domotic systems)
- > receiver and infrared remote control
- > bracket extensions for screens up to 60 cm





| Format | Max overall width | Max lowbar width | Max case width | Max overall height | Max surface width | Max surface height | Max et surface width | Max net surface height | Top standard | Max extra Top | Shipment sizes |
|----------|-------------------|------------------|----------------|--------------------|-------------------|--------------------|----------------------|------------------------|--------------|---------------|----------------|
| | A | -2 | -0.8 | E | F | G | H | I | P | cm | cm |
| Biformat | 250 | 248 | 249.2 | 244 | 218 | 218 | 208 | 208 | 10 | 40 | 258x30x33 |
| | 275 | 273 | 274.2 | 269 | 243 | 243 | 233 | 233 | 10 | 40 | 283x30x33 |
| | 300 | 298 | 299.2 | 294 | 268 | 268 | 258 | 258 | 10 | 40 | 308x30x33 |
| | 325 | 323 | 324.2 | 319 | 293 | 293 | 283 | 283 | 10 | 40 | 333x30x33 |
| | 350 | 348 | 349.2 | 344 | 318 | 318 | 308 | 308 | 10 | 40 | 358x30x33 |

Examples of configurations



All you need to do is choose among the numerous formats available:

- > 1.33 NTSC PAL 4:3
- > 1.66 Wide European
- > 1.78 HDTV 16:9
- > 1.85 Wide
- > 2.35 Cinemascope 21:9
- > 2.40 Panavision

All of them boast perfect tensioning, thanks to the classic tensioning system. Two elastic cables depart from the base and are threaded through dedicated same-size eyelets, placed along the sides of the screen: the arch that forms laterally ensures a harmonious aesthetic impact and a crease-free rolling, despite the presence of the eyelets.

Surfaces Fireproof Certification

B1 M1

PSS formats

